

5,08 mm SOCKET PRINTED CIRCUIT TERMINAL– FEMALE



Production Code: 208 SBDK-D



TECHNICAL DATA

DIMENSIONS

Width	40,52 mm
Height	15,33 mm
Depth	18,15 mm
Pin range	5,08 mm
Pin thickness	-
Pin hole diameter	-

TECHNICAL DATA

Current	16 A
Voltage	250 V
Cable cross section	0,25 – 2,5 mm ²
Cable stripping	7 mm
Screw size	M3
Nominal torque	0,25 Nm
Flammability rating	V0
Coating of metals	μ3+AG

GENERAL ORDERING DATA

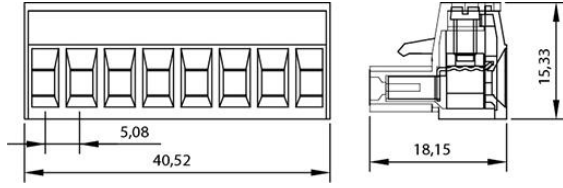
Type	5,08 mm Socket Terminal Series Female Pin 8
Qty	100 pcs
Order no	10.208 - 11.208 - 12.208 13.208 - 14.208 - 15.208
Package weight	1,4 kg
Packaging	Box
Min. Order Qty	100 pcs
Country of origin	TURKEY

*Stock colors are blue and green.

CERTIFICATES

CERTIFICATE	ISSUED BY
TS 10487 EN 60998-2-1	TSE
CE	SZUTEST CO.
RoHS	İNTERTEK A.Ş.
EAC	SERCONS

DRAWINGS

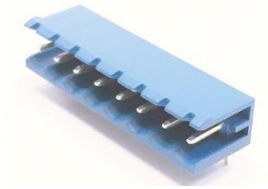


5,08 mm SBDK-E 180° Closed (10.458)



COMBINE PRODUCTS

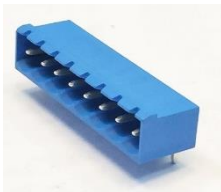
5,08 mm SBDK-E 90° Open (10.308)



5,08 mm SBDK-E 180° Open (10.358)



5,08 mm SBDK-E 90° Closed (10.408)



5,08 mm SKBK (10.608)

