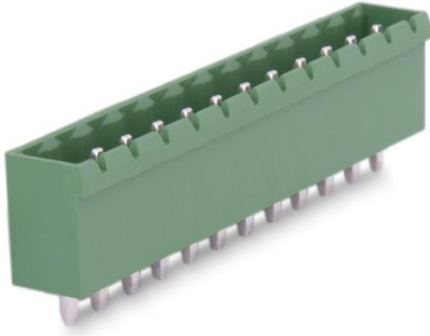


## 3,81 mm SOCKET PRINTED CIRCUIT TERMINAL – MALE 180°



Production Code : 182 SBDK-E2



### TECHNICAL DATA

#### DIMENSIONS

Width	47,40 mm
Height	6,42 mm
Depth	10,00 mm
Pin range	3,81 mm
Pin thickness	1x1 mm
Pin hole diameter	1,55 mm

### TECHNICAL DATA

Current	8 A
Voltage	160 V
Cable cross section	-
Screw size	-
Nominal torque	-
Flammability rating	VO
Coating of metals	μ3+AG

### GENERAL ORDERING DATA

Type	3,81 mm Socket Terminal Series Male 180° Pin 12
Qty	200 pcs
Order no	10.121 - 11.121 - 12.121 13.121 - 14.121 - 15.121
Package weight	1,0 kg
Packaging	Box
Min. Order Qty	200 pcs
Country of origin	TURKEY

\* Stock color is green.

### CERTIFICATES

CERTIFICATE	ISSUED BY
TS 10487 EN 60998-2-1	TSE
CE	SZUTEST CO.
RoHS	İNTERTEK A.Ş.
EAC	SERCONS

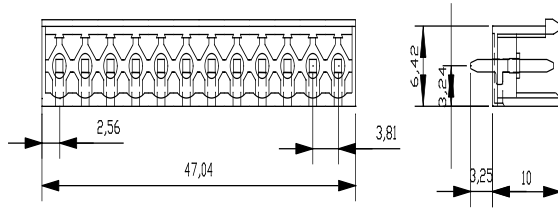
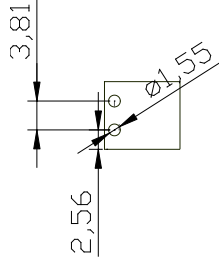
Parseller Mah. Kuyu Sok. No:30 Ümraniye/İstanbul

Tel : +90 216 632 90 04 Fax : +90 216 632 89 31

www.megaradar.com.tr megaradar@megaradar.com.tr

**MEGARADAR®**

Elektrik Elektronik İnşaat San. Tic. A.Ş.

**DRAWINGS****Diagram****COMBINE PRODUCTS****3,81 mm SBDK-D (11.025)**

Parseller Mah. Kuyu Sok. No:30 Ümraniye/İstanbul

**Tel :** +90 216 632 90 04 **Fax :** +90 216 632 89 31**www.megaradar.com.tr** **megaradar@megaradar.com.tr**