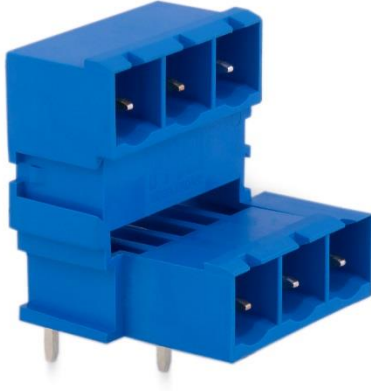


7,62 mm SOCKET PRINTED CIRCUIT TERMINAL – LAYERED MALE 90°



Production Code : 233 SBDK-KE1



TECHNICAL DATA

DIMENSIONS

Width	26,67 mm
Height	22,16 mm
Depth	26,64 mm
Pin range	7,62 mm
Pin thickness	1x1 mm
Pin hole diameter	1,55 mm

TECHNICAL DATA

Current	16 A
Voltage	400 V
Cable cross section	-
Cable stripping	-
Screw size	-
Nominal torque	-
Flammability rating	V0
Coating of metals	µ3+AG

GENERAL ORDERING DATA

Type	7,62 mm Socket Term. Ser. Layered Male 90° P:3
Qty	50 pcs
Order no	10.925 - 11.925 - 12.925 - 13.925 - 14.925 - 15.925
Package weight	0,35 kg
Packaging	Box
Min. Order Qty	50 pcs
Country of origin	TURKEY

* Stock color is blue and green.

CERTIFICATES

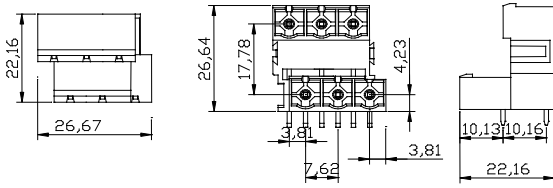
CERTIFICATE	ISSUED BY
TS 10487 EN 60998-2-1	TSE
CE	SZUTEST CO.
RoHS	İNTERTEK A.Ş.
EAC	SERCONS

Parseller Mah. Kuyu Sok. No:30 Ümraniye/İstanbul

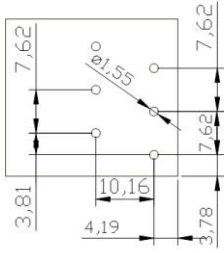
Tel : +90 216 632 90 04 Fax : +90 216 632 89 31

www.megaradar.com.tr megaradar@megaradar.com.tr

DRAWINGS



Diagram



COMBINE PRODUCTS

7,62 mm SBDK-D (10.703)

