

5,08 mm SOCKET CABLE CONNECTOR MALE



Production Code : 524 SKBK



TECHNICAL DATA

DIMENSIONS

Width	121,80 mm
Height	15,33 mm
Depth	22,00 mm
Pin range	5,08 mm
Pin thickness	1x1 mm
Pin hole diameter	1,55 mm

TECHNICAL DATA

Current	16 A
Voltage	250 V
Cable cross section	0,25 – 2,5 mm ²
Cable stripping	7 mm
Screw size	M3
Nominal torque	0,25 Nm
Flammability rating	V0
Coating of metals	μ3+AG

GENERAL ORDERING DATA

Type	5,08 mm Socket Cable Connector Male Pin 24
Qty	25 pcs
Order no	10.624 - 11.624 - 12.624 13.624 - 14.624 - 15.624
Package weight	0,93 kg
Packaging	Box
Min. Order Qty	25 pcs
Country of origin	TURKEY

* Stock color is blue.

CERTIFICATES

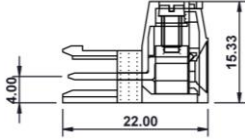
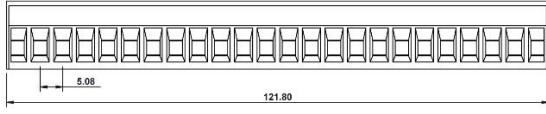
CERTIFICATE	ISSUED BY
TS 10487 EN 60998-2-1	TSE
CE	SZUTEST CO.
RoHS	İNTERTEK A.Ş.
EAC	SERCONS



MEGARADAR®

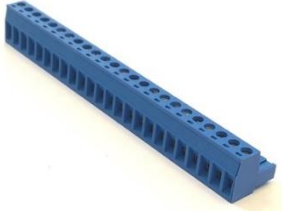
Elektrik Elektronik İnşaat San. Tic. A.Ş.

DRAWINGS



COMBINE PRODUCTS

5,08 mm SBDK-D (10.224)



5,08 mm Cable Connector Rail Distance (60.460)

