

5,08 mm SOCKET PRINTED CIRCUIT TERMINAL – MALE 180° OPEN



Production Code : 223 SBDK-E2A



TECHNICAL DATA

DIMENSIONS

Width	116,72 mm
Height	12,00 mm
Depth	8,00 mm
Pin range	5,08 mm
Pin thickness	1x1 mm
Pin hole diameter	1,55 mm

TECHNICAL DATA

Current	16 A
Voltage	250 V
Cable cross section	-
Screw size	-
Nominal torque	-
Flammability rating	V0
Coating of metals	μ3+AG

GENERAL ORDERING DATA

Type	5,08 mm Socket Term. Ser.Male 180°Open Pin23
Qty	25 pcs
Order no	10.373 - 11.373 - 12.373 13.373 - 14.373 - 15.373
Package weight	0,25 kg
Packaging	Box
Min. Order Qty	25 pcs
Country of origin	TURKEY

* Stock colors are blue and green.

CERTIFICATES

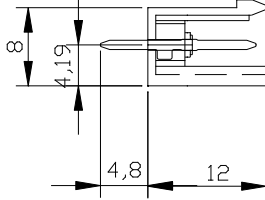
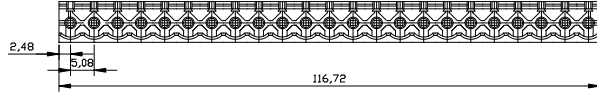
CERTIFICATE	ISSUED BY
TS 10487 EN 60998-2-1	TSE
CE	SZUTEST CO.
RoHS	İNTERTEK A.Ş.
EAC	SERCONS

Parseller Mah. Kuyu Sok. No:30 Ümraniye/İstanbul

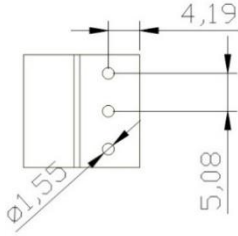
Tel : +90 216 632 90 04 Fax : +90 216 632 89 31

www.megaradar.com.tr megaradar@megaradar.com.tr

DRAWINGS



Diagram



COMBINE PRODUCTS

5,08 mm SBDK-D (10.223)

