

5,08 mm SOCKET PRINTED CIRCUIT TERMINAL – MALE 180° OPEN



Production Code : 220 SBDK-E2A



TECHNICAL DATA

DIMENSIONS

| | |
|-------------------|-----------|
| Width | 101,48 mm |
| Height | 12,00 mm |
| Depth | 8,00 mm |
| Pin range | 5,08 mm |
| Pin thickness | 1x1 mm |
| Pin hole diameter | 1,55 mm |

TECHNICAL DATA

| | |
|---------------------|-------|
| Current | 16 A |
| Voltage | 250 V |
| Cable cross section | - |
| Screw size | - |
| Nominal torque | - |
| Flammability rating | V0 |
| Coating of metals | μ3+AG |

GENERAL ORDERING DATA

| | |
|-------------------|------------------------------------------------------|
| Type | 5,08 mm Socket Term. Ser.Male 180°Open Pin20 |
| Qty | 25 pcs |
| Order no | 10.370 - 11.370 - 12.370 13.370 - 14.370 - 15.370 |
| Package weight | 0,21 kg |
| Packaging | Box |
| Min. Order Qty | 25 pcs |
| Country of origin | TURKEY |

* Stock colors are blue and green.

CERTIFICATES

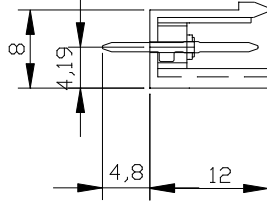
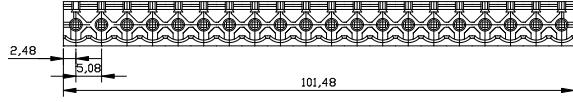
| CERTIFICATE | ISSUED BY |
|-----------------------|---------------|
| TS 10487 EN 60998-2-1 | TSE |
| CE | SZUTEST CO. |
| RoHS | İNTERTEK A.Ş. |
| EAC | SERCONS |

Parseller Mah. Kuyu Sok. No:30 Ümraniye/İstanbul

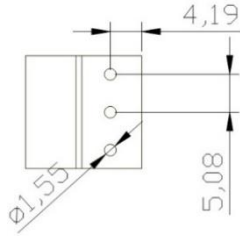
Tel : +90 216 632 90 04 Fax : +90 216 632 89 31

www.megaradar.com.tr megaradar@megaradar.com.tr

DRAWINGS



Diagram



COMBINE PRODUCTS

5,08 mm SBDK-D (10.220)

