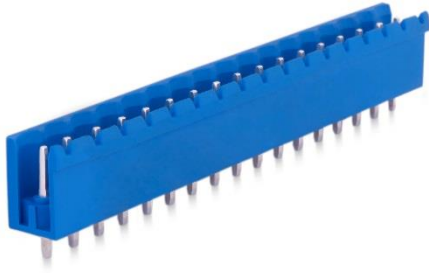


## 5,08 mm SOCKET PRINTED CIRCUIT TERMINAL – MALE 180° OPEN



Production Code : 217 SBDK-E2A



### TECHNICAL DATA

#### DIMENSIONS

Width	86,24 mm
Height	12,00 mm
Depth	8,00 mm
Pin range	5,08 mm
Pin thickness	1x1 mm
Pin hole diameter	1,55 mm

### TECHNICAL DATA

Current	16 A
Voltage	250 V
Cable cross section	-
Screw size	-
Nominal torque	-
Flammability rating	VO
Coating of metals	μ3+AG

### GENERAL ORDERING DATA

Type	5,08 mm Socket Term. Ser.Male 180°Open Pin17
Qty	50 pcs
Order no	10.367 - 11.367 - 12.367 13.367 - 14.367 - 15.367
Package weight	0,36 kg
Packaging	Box
Min. Order Qty	50 pcs
Country of origin	TURKEY

\* Stock colors are blue and green.

### CERTIFICATES

CERTIFICATE	ISSUED BY
TS 10487 EN 60998-2-1	TSE
CE	SZUTEST CO.
RoHS	İNTERTEK A.Ş.
EAC	SERCONS

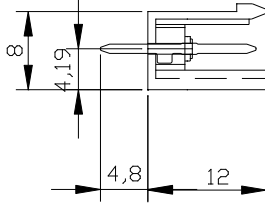
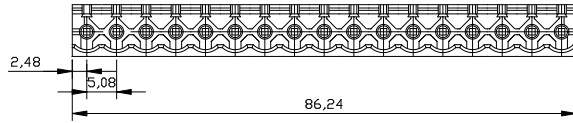
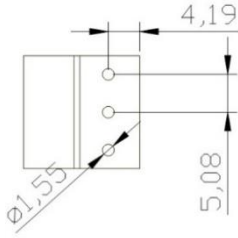
Parseller Mah. Kuyu Sok. No:30 Ümraniye/İstanbul

Tel : +90 216 632 90 04 Fax : +90 216 632 89 31

[www.megaradar.com.tr](http://www.megaradar.com.tr) [megaradar@megaradar.com.tr](mailto:megaradar@megaradar.com.tr)

**MEGARADAR**

Elektrik Elektronik İnşaat San. Tic. A.Ş.

**DRAWINGS****Diagram****COMBINE PRODUCTS****5,08 mm SBDK-D (10.217)**

Parseller Mah. Kuyu Sok. No:30 Ümraniye/İstanbul

**Tel :** +90 216 632 90 04 **Fax :** +90 216 632 89 31**www.megaradar.com.tr** **megaradar@megaradar.com.tr**