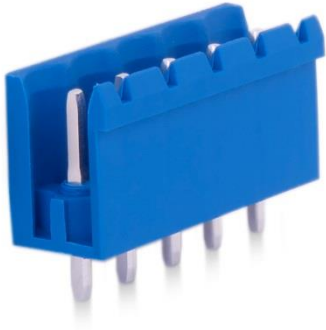


**5,08 mm SOCKET PRINTED
CIRCUIT TERMINAL –
MALE 180° OPEN**



Production Code : 205 SBDK-E2A



TECHNICAL DATA

DIMENSIONS

Width	25,28 mm
Height	12,00 mm
Depth	8,00 mm
Pin range	5,08 mm
Pin thickness	1x1 mm
Pin hole diameter	1,55 mm

TECHNICAL DATA

Current	16 A
Voltage	250 V
Cable cross section	-
Screw size	-
Nominal torque	-
Flammability rating	V0
Coating of metals	μ3+AG

GENERAL ORDERING DATA

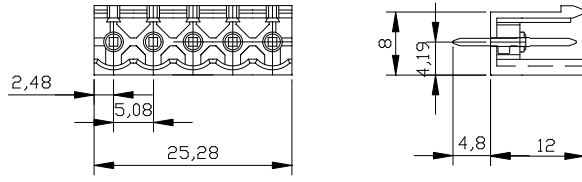
Type	5,08 mm Socket Term. Ser.Male 180° Open Pin 5
Qty	100 pcs
Order no	10.355 - 11.355 - 12.355 13.355 - 14.355 - 15.355
Package weight	0,21 kg
Packaging	Box
Min. Order Qty	100 pcs
Country of origin	TURKEY

* Stock colors are blue and green.

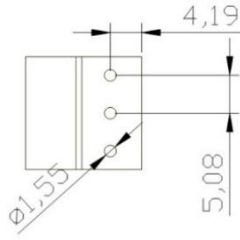
CERTIFICATES

CERTIFICATE	ISSUED BY
TS 10487 EN 60998-2-1	TSE
CE	SZUTEST CO.
RoHS	İNTERTEK A.Ş.
EAC	SERCONS

DRAWINGS



Diagram



COMBINE PRODUCTS

5,08 mm SBDK-D (10.205)



5,08 mm SBDK-DD (10.255)

