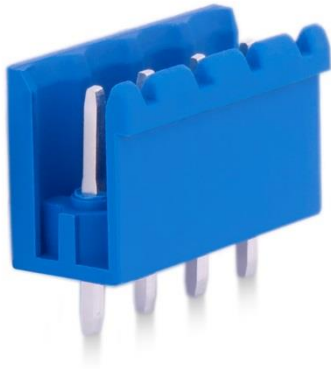


5,08 mm SOCKET PRINTED CIRCUIT TERMINAL – MALE 180° OPEN



Production Code : 204 SBDK-E2A



TECHNICAL DATA

DIMENSIONS

Width	20,20 mm
Height	12,00 mm
Depth	8,00 mm
Pin range	5,08 mm
Pin thickness	1x1 mm
Pin hole diameter	1,55 mm

TECHNICAL DATA

Current	16 A
Voltage	250 V
Cable cross section	-
Screw size	-
Nominal torque	-
Flammability rating	V0
Coating of metals	μ3+AG

GENERAL ORDERING DATA

Type	5,08 mm Socket Term. Ser.Male 180° Open Pin 4
Qty	100 pcs
Order no	10.354 - 11.354 - 12.354 13.354 - 14.354 - 15.354
Package weight	0,17 kg
Packaging	Box
Min. Order Qty	100 pcs
Country of origin	TURKEY

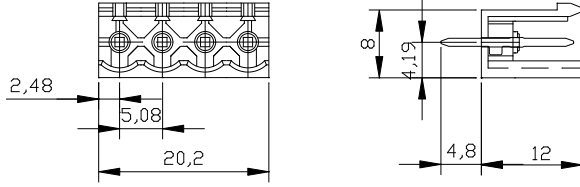
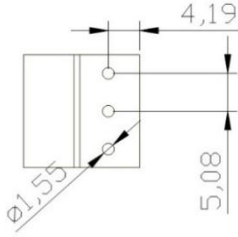
* Stock colors are blue and green.

CERTIFICATES

CERTIFICATE	ISSUED BY
TS 10487 EN 60998-2-1	TSE
CE	SZUTEST CO.
RoHS	İNTERTEK A.Ş.
EAC	SERCONS

**MEGARADAR®**

Elektrik Elektronik İnşaat San. Tic. A.Ş.

DRAWINGS**Diagram****COMBINE PRODUCTS****5,08 mm SBDK-D (10.204)****5,08 mm SBDK-DD (10.254)**

Parseller Mah. Kuyu Sok. No:30 Ümraniye/İstanbul

Tel : +90 216 632 90 04 **Fax :** +90 216 632 89 31www.megaradar.com.tr megaradar@megaradar.com.tr