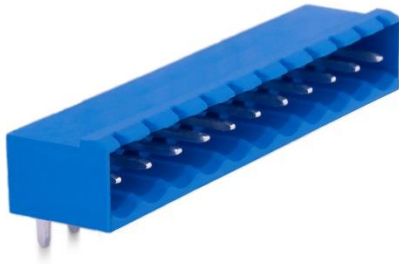


5,08 mm SOCKET PRINTED CIRCUIT TERMINAL – MALE 90° CLOSED



Production Code : 211 SBDK-E1



TECHNICAL DATA

DIMENSIONS

Width	57,18 mm
Height	12,00 mm
Depth	8,00 mm
Pin range	5,08 mm
Pin thickness	1x1 mm
Pin hole diameter	1,55 mm

TECHNICAL DATA

Current	16 A
Voltage	250 V
Cable cross section	-
Screw size	-
Nominal torque	-
Flammability rating	VO
Coating of metals	μ3+AG

GENERAL ORDERING DATA

Type	5,08 mm Socket Term. Ser.Male 90°Closed Pin11
Qty	50 pcs
Order no	10.411 - 11.411 - 12.411 13.411 - 14.411 - 15.411
Package weight	0,28 kg
Packaging	Box
Min. Order Qty	50 pcs
Country of origin	TURKEY

* Stock colors are blue and green.

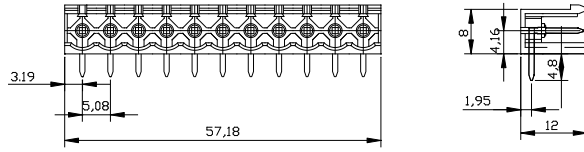
CERTIFICATES

CERTIFICATE	ISSUED BY
TS 10487 EN 60998-2-1	TSE
CE	SZUTEST CO.
RoHS	İNTERTEK A.Ş.
EAC	SERCONS

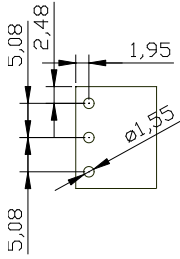
**MEGARADAR**

Elektrik Elektronik İnşaat San. Tic. A.Ş.

DRAWINGS



Diagram



COMBINE PRODUCTS

5,08 mm SBDK-D (10.211)

