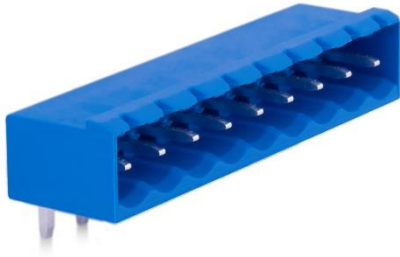


## 5,08 mm SOCKET PRINTED CIRCUIT TERMINAL – MALE 90° CLOSED



Production Code : 209 SBDK-E1



### TECHNICAL DATA

#### DIMENSIONS

Width	47,02 mm
Height	12,00 mm
Depth	8,00 mm
Pin range	5,08 mm
Pin thickness	1x1 mm
Pin hole diameter	1,55 mm

### TECHNICAL DATA

Current	16 A
Voltage	250 V
Cable cross section	-
Screw size	-
Nominal torque	-
Flammability rating	VO
Coating of metals	μ3+AG

### GENERAL ORDERING DATA

Type	5,08 mm Socket Term. Ser. Male 90°Closed Pin 9
Qty	100 pcs
Order no	10.409 - 11.409 - 12.409 13.409 - 14.409 - 15.409
Package weight	0,45 kg
Packaging	Box
Min. Order Qty	100 pcs
Country of origin	TURKEY

\* Stock colors are blue and green.

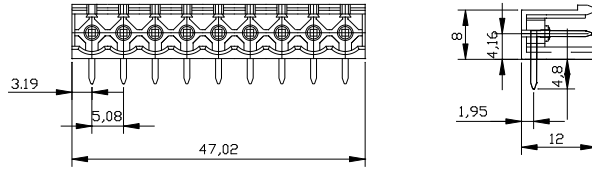
### CERTIFICATES

CERTIFICATE	ISSUED BY
TS 10487 EN 60998-2-1	TSE
CE	SZUTEST CO.
RoHS	İNTERTEK A.Ş.
EAC	SERCONS

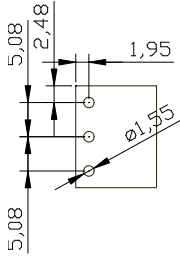
**MEGARADAR®**

Elektrik Elektronik İnşaat San. Tic. A.Ş.

## DRAWINGS



## Diagram



## COMBINE PRODUCTS

**5,08 mm SBDK-D (10.209)**