

5,08 mm SOCKET PRINTED CIRCUIT TERMINAL– FEMALE



Production Code: 224 SBDK-D



TECHNICAL DATA

DIMENSIONS

Width	121,80 mm
Height	15,33 mm
Depth	18,15 mm
Pin range	5,08 mm
Pin thickness	-
Pin hole diameter	-

TECHNICAL DATA

Current	16 A
Voltage	250 V
Cable cross section	0,25 – 2,5 mm ²
Cable stripping	7 mm
Screw size	M3
Nominal torque	0,25 Nm
Flammability rating	V0
Coating of metals	µ3+AG

GENERAL ORDERING DATA

Type	5,08 mm Socket Terminal Series Female Pin 24
Qty	25 pcs
Order no	10.224 - 11.224 - 12.224 13.224 - 14.224 - 15.224
Package weight	1,03 kg
Packaging	Box
Min. Order Qty	25 pcs
Country of origin	TURKEY

*Stock colors are blue and green.

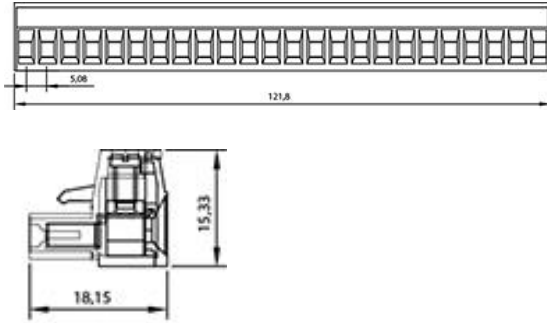
CERTIFICATES

CERTIFICATE	ISSUED BY
TS 10487 EN 60998-2-1	TSE
CE	SZUTEST CO.
RoHS	İNTERTEK A.Ş.
EAC	SERCONS

**MEGARADAR®**

Elektrik Elektronik İnşaat San. Tic. A.Ş.

DRAWINGS



COMBINE PRODUCTS

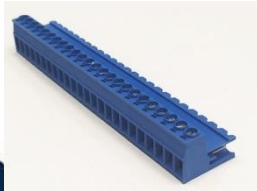
5,08 mm SBDK-E 90° Open (10.324)



5,08 mm SBDK-E 180° Open (10.374)



5,08 mm SKBK (10.624)



Parseller Mah. Kuyu Sok. No:30 Ümraniye/İstanbul

Tel : +90 216 632 90 04 **Fax :** +90 216 632 89 31

www.megaradar.com.tr megaradar@megaradar.com.tr