

10,16 mm MODULAR PRINTED CIRCUIT TERMINAL



Production Code : 421 P5 MBDK



Modular terminal blocks are designed to be expanded according to the number of poles required.

TECHNICAL DATA

DIMENSIONS

Width	50,80 mm
Height	30,00 mm
Depth	18,55 mm
Pin range	10,16x10,16mm
Pin thickness	1x1 mm
Pin hole diameter	1,6 mm

TECHNICAL DATA

Current	57 A
Voltage	690 V
Cable cross section	0,25 – 10 mm ²
Screw size	M4
Nominal torque	1,2 Nm
Flammability rating	V0
Coating of metals	μ3+AG

GENERAL ORDERING DATA

Type	10,16 mm Modular Terminal Ser. Pin:5
Qty	25 pcs
Order no	20.605 – 21.605 – 22.605 23.605 - 24.605 - 25.605
Package weight	1,25 kg
Packaging	Box
Min. Order Qty	25 pcs
Country of origin	TURKEY

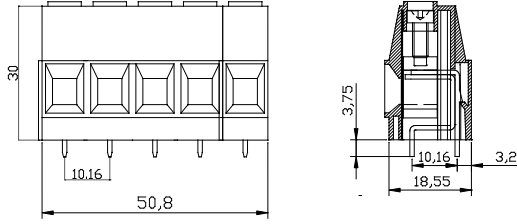
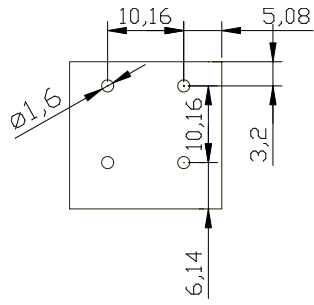
* Stock color is green.

CERTIFICATES

CERTIFICATE	ISSUED BY
TS 10487 EN 60998-2-1	TSE
CE	SZUTEST CO.
RoHS	İNTERTEK A.Ş.
EAC	SERCONS

**MEGARADAR®**

Elektrik Elektronik İnşaat San. Tic. A.Ş.

DRAWINGS**Diagram****COMBINE PRODUCTS****10,16 Module Plug****10,16 Module Dividing Plate**