

## 10,16 mm MODULAR PRINTED CIRCUIT TERMINAL



Production Code : 421 P2 MBDK



Modular terminal blocks are designed to be expanded according to the number of poles required.

### TECHNICAL DATA

#### DIMENSIONS

Width	20,32 mm
Height	30,00 mm
Depth	18,55 mm
Pin range	10,16x10,16mm
Pin thickness	1x1 mm
Pin hole diameter	1,6 mm

### TECHNICAL DATA

Current	57 A
Voltage	690 V
Cable cross section	0,25 – 10 mm <sup>2</sup>
Screw size	M4
Nominal torque	1,2 Nm
Flammability rating	V0
Coating of metals	μ3+AG

### GENERAL ORDERING DATA

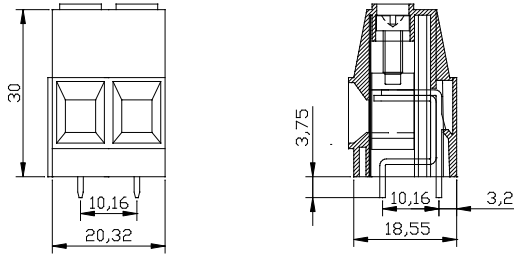
Type	10,16 mm Modular Terminal Ser. Pin:2
Qty	50 pcs
Order no	20.590 – 21.590 – 22.590 23.590 - 24.590 - 25.590
Package weight	1,0 kg
Packaging	Box
Min. Order Qty	50 pcs
Country of origin	TURKEY

\* Stock color is green.

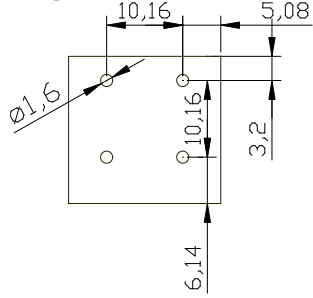
### CERTIFICATES

CERTIFICATE	ISSUED BY
TS 10487 EN 60998-2-1	TSE
CE	SZUTEST CO.
RoHS	İNTERTEK A.Ş.
EAC	SERCONS

## DRAWINGS



### Diagram



## COMBINE PRODUCTS

### 10,16 Module Plug



### 10,16 Module Dividing Plate

